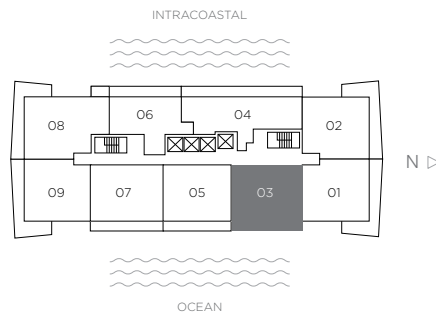
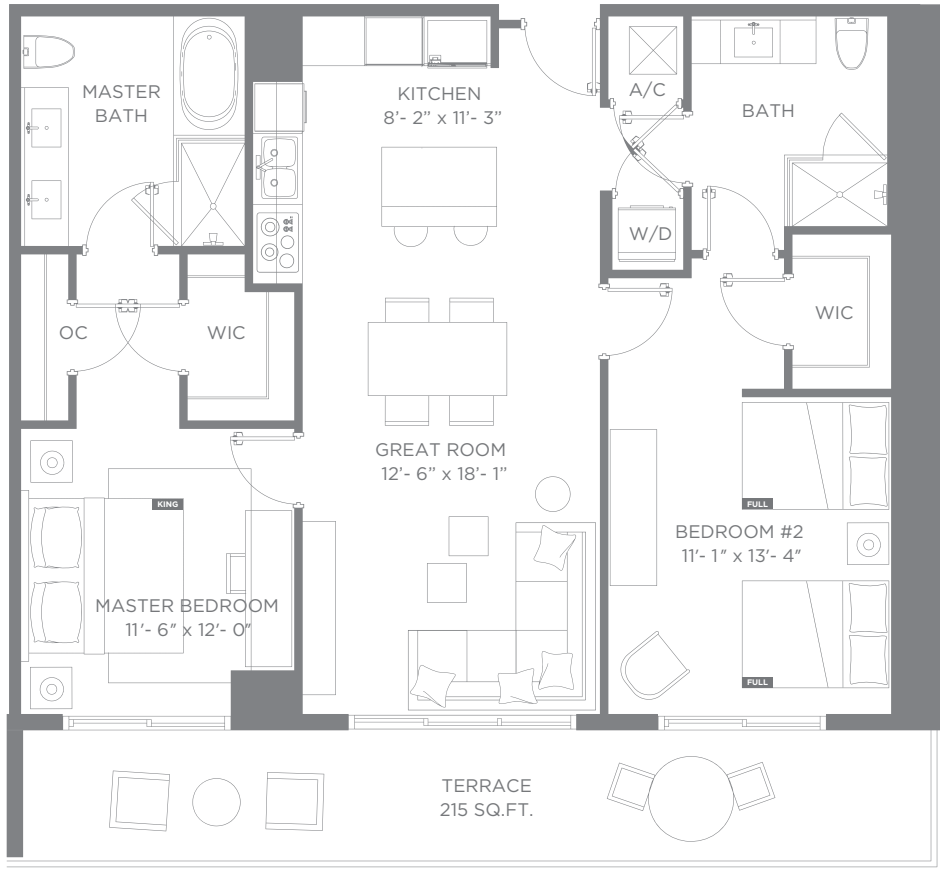


HYDE[™]
beach house
 HOLLYWOOD FLORIDA



RESIDENCE 03 2 BEDROOMS 2 BATHS

RESORT UNIT FROM FLOORS 7 - 34 / CONDO UNIT FROM FLOORS 35 - 43

Interior 1,100 sq ft / 102.19 m² Terraces 215 sq ft / 19.97 m² Total 1,315 sq ft / 122.16 m²

There are various methods for calculating the square footage of a Unit and depending on the method of calculation, the quoted square footage of a Unit may vary. The dimensions in the Unit shown in these floor plans have been calculated from the exterior boundaries of the exterior walls to the centerline of interior demising walls, including common elements such as structural walls and other interior structural components of the building and are greater than the dimensions that would be determined by using the description and definition of the "Unit" set forth in the Prospectus and the Declaration. The measurements of a room set forth on this floor plan are generally taken at the greatest points of each given room (as if the room were a perfect rectangle) without regard for any cutouts. Accordingly, the area of the actual room will typically smaller than the product obtained by multiplying the stated length by the stated width. All dimensions are approximate and may vary with actual construction. All floor plans are subject to change. The furnishings and décor illustrated are not included with the purchase of the Unit. Consult the Prospectus for information regarding what is offered with the Unit and the calculation of the Unit square footage and dimensions.